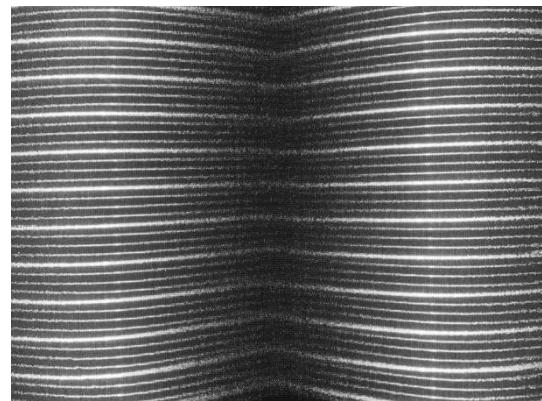
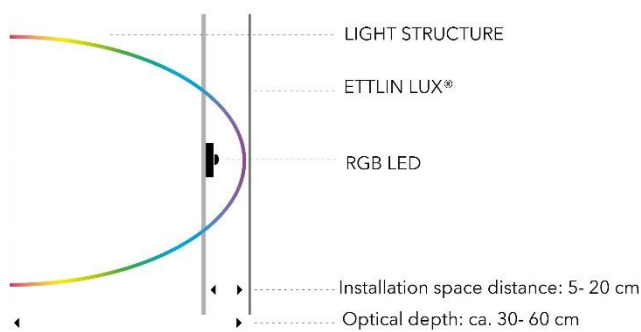


## An ideal combination of textile and light

Decolux is an ideal combination of aesthetic surfaces and pleasant haptics combined with three-dimensional lighting design. The effect lines of Decolux create exciting accents and increase attention. Thanks to the textile, decorative surface, Decolux is also convincing when switched off.

- UV resistant
- opaque
- high colour and light fastness
- internationally patented

## Detail drawing optical depth



<b>Colour</b>	black
<b>Material</b>	PET/PVDF
<b>Weight</b>	~ 191 g/m <sup>2</sup>
<b>Thickness</b>	~ 0,43 mm
<b>Tensile strength in direction of light</b> DIN EN ISO 13934-1	~ 367 N/5 cm
<b>Tensile strength orthogonally to direction of light effect</b> DIN EN ISO 13934-1	~ 1420 N/5 cm
<b>Acoustic measurement</b> In a frame system with 9 and 12 cm depth	Sound absorption according to DIN EN ISO 11654 $\alpha_w = 0.65$ Sound absorber <b>class C "highly absorbent"</b>
<b>Fire classification</b>	fire protection class: B1 "hardly inflammable" according to DIN 4102, part 1
<b>Sizes</b>	usable width: 195 cm width: 200 cm ± 3 cm length: 5 m   10 m   30 m special dimensions and cuttings on request

